

2-in-1 Coding Technology

More cartridge selections, more ink solutions

HP

Technology Features

- + High-speed & high-resolution
- + Versatile ink portfolio



IUT

Technology Features

- + Solid 1-inch cartridge design
- + No extra printhead needed for 1-inch print height
- + Available in water/solvent based ink



Cartridge Key Features

	Print Height	Throw Distance	Print Speed	Print Resolution
HP	0.5"	6 mm	300 m/min	600dpi
IUT	1"	6 mm	150 m/min	300dpi

Ink Availability

	Water	Solvent	UV Ink	Invisible Ink	Food Grade Ink
HP	○	○	○	○	—
IUT	○	○	—	—	—



A1 Inkjet Printer

Printing Technology	High Resolution Thermal Inkjet
Cartridge Support	HP & IUT
Display	5" Color LCD Capacitive Touchscreen 480x800 (portrait) (Compatible with most of the medical and industrial gloves.)
Print Height	0.5" Single Printhead: 12.7mm (0.5 inch) Stitch Printheads: 12.7mm x 2 @ 24.75mm (0.98 inch) 1.0" Single Printhead: 25.4mm (1.0 inch) Stitch Printheads: 25.4mm x 2 @ 48.7mm (1.92 inch)
Maximum Printing Resolution	600 DPI
Maximum Printing Speed	60.96 @ 300 DPI & 121 m/min @ 150 DPI
Maximum Print Distance	6mm
Printing Functions	1. Static Data: Text, Shape, and Image 2. Dynamic Data: Variables, Shift, Counter, Date/Time, and Barcodes
Font Type	True Type Fonts: Amiri-Regular, Arimo-Regular, DejaVuSans, NotoSans-Regular, OCR-B, OpenSans-Regular, and Sarabun-Regular Open Type Fonts: NotoSansCJKtc-Medium, NotoSansKR-Regular, NotoSansJP-Regular, and NotoSansTC-Regular
System Language	Arabic, Bulgarian, Serbian, Czech, German, English, Spanish, French, Korean, Italian, Hungarian, Dutch, Japanese, Polish, Portuguese, Russian, Romanian, Slovak, Swedish, Thai, Vietnamese, Turkish, Chinese Traditional, and Chinese Simplified
1D and 2D Barcodes	EAN-8, EAN-13, EAN-14, EAN128, UPCA, UPCE, CODE39, CODE128, ITF14 (SCC-14), NVE18 (SSCC-18), INTER25, CODABAR, PDF417, DATAMATRIX, QR code, GS1 (DataMatrix, DataBar, DataBar EXP, DataBar-Limited, DataBar-Limited Composite, DataBar-Stacked, DataBar-Stacked Composite, QR code), DUN14, and Aztec Code
I/O Ports	1. RJ-45 port x 1 2. Encoder port x 1 3. RS-232/485 port x 1 4. Photocell sensor port x 1 5. I/O port x 1 6. USB 2.0 port x1
Communication Protocols	Modbus TCP IP / UDP, Modbus RTU 485
Dimensions	169.8mm (L) x 136mm (H) x 125mm (W) (6.69 inch x 5.35 inch x 4.92 inch)
Weight	1.8kg (3.97lb) w/o guide plate
Operating Temperature	0°C - 40°C (32°F - 104°F)
Operating Humidity	0% - 90% RH, non-condensing



ANSER CODING INC.

+886-2-2697-3488 sales@anser-coding.com
34F., No.99, Sec. 1, Xintai 5th Rd., Xizhi Dist.,
New Taipei City 221, Taiwan

Copyright © 2023.04 ANSER CODING INC. All rights reserved.
The information at hand is provided as available at the time of printing, and ANSER reserves the right to change any information without updating this publication.
ANSER does not assume any responsibility for any errors or omissions in this publication.

Distributed by :

EDGEWORTHY ENTERPRISES
19 Maligaya St., Rosario 6 Subdivision
Sta. Lucia, Pasig City, Philippines 1608
Phone# : +63.2.85465750
Mobile# : +63.917.8355357
+63.922-8355357

ANSER



ANSER A1

Redefine Your Standard of
Cost-Effective Coding Solution



Low Cost of
Ownership



Maintenance-Free
Coding Solution



Easy Installation &
Operation

Simple Design Unmatched Performance

ANSER A1 is designed to minimize the total cost of ownership while maximizing production efficiency and uptime



“Redefine your
standard of
cost-effective
coding solution”

connect

Improving your production uptime & efficiency



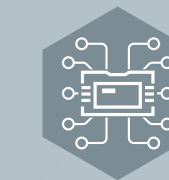
Remote & Centralized Control

- + Real-time centralized control & multi-production lines monitoring
- + Support off-site remote service and technical troubleshooting



Intelligent Automation

- + Print data from ERP or MES, reduces error by manual data input
- + Production & operation analysis report, enhances factory management quality & control
- + SDK & consulting service, reduces your integration time & cost



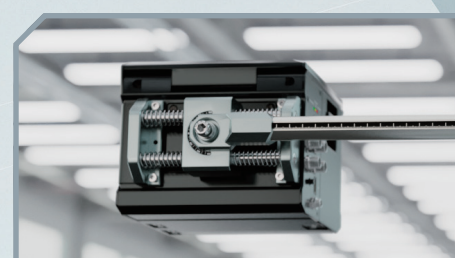
Interconnectivity with Peripheral Equipment

- + Easy collaboration with common production equipments, such as barcode scanner or check weigher
- + Multiple open wired cables available for fast & easy equipment integration



Eco-Friendly Direct Coding

Reduce label usage and preprinted box wastes to support environmental sustainability



Easy Setup & Maintenance

Effortless printer setup with zero operating maintenance requirement to reduce unnecessary expenses



Low Cost of Ownership

Advanced software feature to achieve best cost-per-print, making ANSER A1 a true cost-effective coding solution



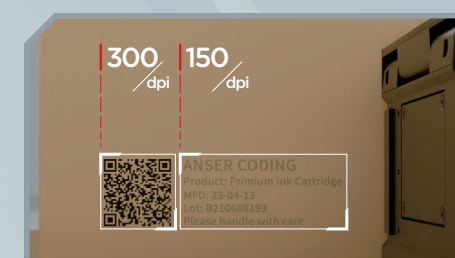
Smart Setup Assistant

Simple 3-step setup guidance, allowing you to get your printer up and running in 3-min or less



ANSER QuickSwitch

Optimize your production change process to reduce downtime costs. Anser QuickSwitch gets the job done in 1-Quick-Swipe



Multi-DPI Setting

Reduce your cost-per-print on select object while maintaining barcode clarity to ensure reliable code readability

